

INCOMING
1ST YEARS
2025

Colaiste Eamonn Ris




Wexford CBS



Fáilte

- Mr Michael McMahon (Principal)
- Mr John Nolan (Deputy Principal)
- Ms Christine Martin (Guidance Counsellor)
- Ms Roisín Beaver



Information Required

Forms required (to be returned by Friday 28 March)

School Record Form*

Code of Behaviour and School Trip Permission Form*

Acceptable Use Policy Form *

Acceptable Use Policy (E-Mail) Form*

Guidance and Learning Support Consent Form *

Sensitive Personal Data Form *

Circular 0023/2016-Data Collection Form *

Other Information

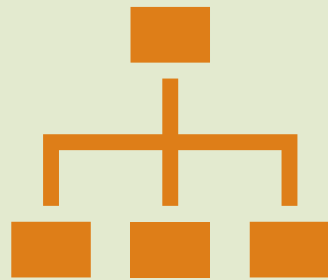
www.wexfordcbs.ie

Transition Issues Booklet (on School Website)

Subject Choice Form (VShare Tab on website)

Minister's Letter re Book Scheme and Guide for Parents Post- Primary Schoolbooks Scheme

Other Information in Pack



Organisation Strategies



Transition Strategies



KEY
POLICIES

Code of Behaviour

Anti-bullying Policy (Bí Cineálta)

R.S.E. Policy

Acceptable Use Policy

Acceptable Use Policy (E-Mail)

www.wexfordcbs.ie



First Year 2024/2025

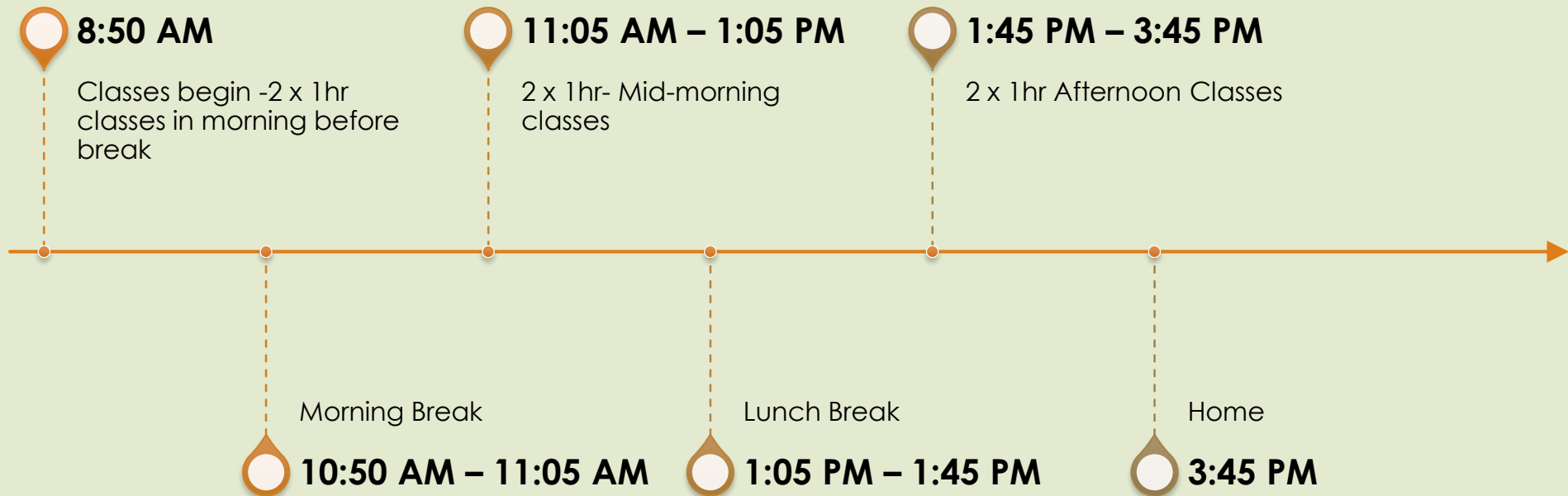
- ▶ 120 Students
- ▶ Four core classes/ 30 students per class
- ▶ JCP-Junior Cycle Programme
- ▶ Subjects
- ▶ English
- ▶ Irish
- ▶ Maths
- ▶ History
- ▶ Geography
- ▶ Religion
- ▶ Science
- ▶ + 3 optional subjects



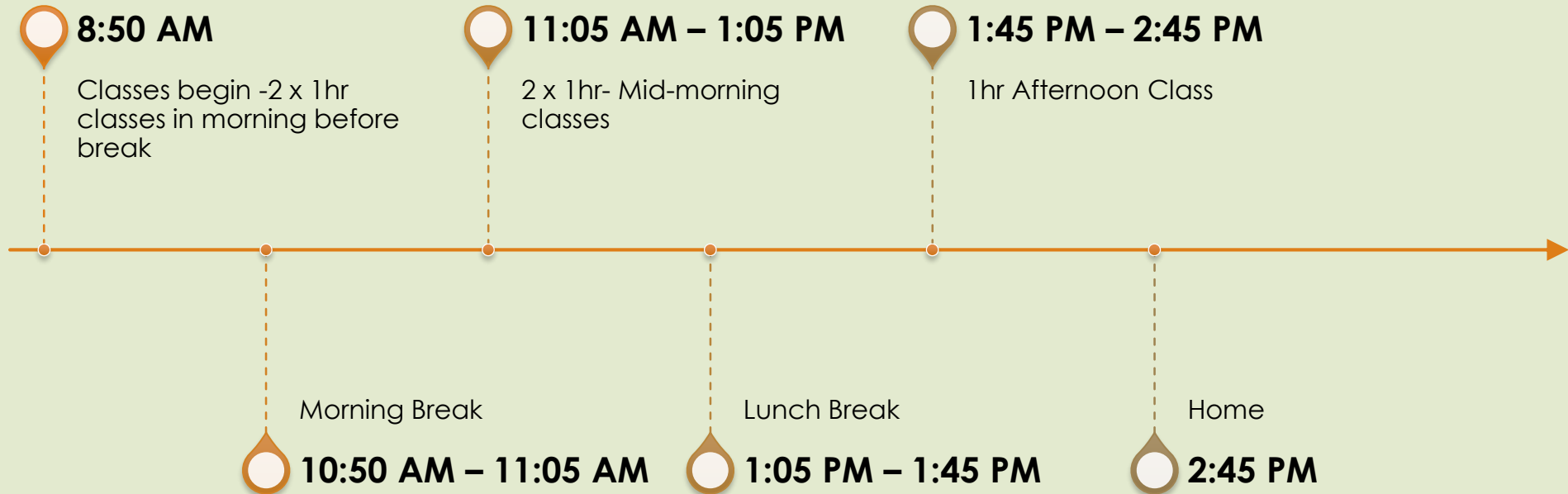
Junior Cycle

- ▶ 9 exam subjects
- ▶ 2 short courses (P.E., S.P.H.E.)
- ▶ Formal Certification - **Junior Cycle Profile of Achievement** – RESULTS IN THESE SUBJECTS PLUS OTHER AREAS OF LEARNING
- ▶ Wellbeing – (Made up of P.E., C.S.P.E., S.P.H.E., Guidance)

School Day (Monday-Wednesday)



School day (THURSDAY-FRIDAY)



School Day continued



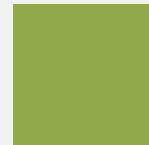
First Year students are not allowed to leave the school premises at any time during the school day unless accompanied by a teacher or parent/guardian (Rule applies to all Junior Cycle students)




Those wishing for son to go home for lunch must collect the student on a daily basis-No exceptions



REASON FOR
ABSENCE/NOTIFICATION OF
APPOINTMENT ON VSWARE



MOBILE PHONES ARE NOT ALLOWED
IN SCHOOL



FEES 2025/2026

- ▶ Voluntary Contribution €90 (or €90 per family)
August 2025(Online)
- ▶ School Pitch €30 or €50 for family
August 2025 (Online)
- ▶ Lockers €15 collected by Parents' Council online

All Payments-Easy Payments Plus (tab on school website)

www.wexfordcbs.ie

Uniform

- ▶ Black Shoes
- ▶ Navy Trousers
- ▶ Pale Blue Shirt
- ▶ Grey Jumper with School Crest
- ▶ Navy tie with pale blue stripe
- ▶ School Jacket (Various options available-O'Neill's website or local stores)
- ▶ Good idea to have a backup uniform

School Transport



All queries re school transport should be directed to Bus Éireann on 051 873401 or e-mail schools.waterford@buseireann.ie.



To apply, go to www.buseireann.ie/schooltransport and follow links and submit form or alternatively download and submit by post to Waterford School Transport Office, Bus Éireann, The Quay, Waterford. You need to know the school's roll number: 63640R.



DES Phone 057 9325466/7 or e-mail school.transport@education.gov.ie For more details go to www.education.ie



Eligibility for new entrants will be determined by reference to the distance they reside from their nearest Post Primary Education Centre

FREE Book Lending Scheme



Book Lending Scheme to cover
all subjects and stationery



Calculator/Mathematical set/Art
sketch pads also covered



Onus on students to take care of
the books as damaged/lost
books will have to be replaced.



Assessment information

CAT 4

Use to inform us about your son's strengths across a number of competencies

Scheduled for Saturday
22nd March at 9am

Primary School Educational
Passports (forwarded by
Primary Schools)



Further Communication

- ▶ Notification in May regarding subject options
- ▶ Notification in mid-August regarding return to school dates etc.
- ▶ October Meeting for First Year Parents



Learning Support

Ms. Marie Connell (Learning Support Co-ordinator)

Mr Ger Forde (ASD Unit)

If you have a professional psychological assessment, please send a copy in as soon as possible (not original)

CAREER GUIDANCE & COUNSELLING

Ms. Christine Martin & Ms.
Leanne Goff- Guidance
Counsellors

*“True guidance is like a
small torch in a dark
forest. It does not show
everything at once, but
gives enough light for the
next step to be safe”*



ROLE OF THE GUIDANCE COUNSELLOR:

1

- **Educational** – Subject Choice, Study Skills etc.

2

- **Careers** – CAO, careers classes, Open days, Guest speakers etc.

3

- **Personal** – anxiety, panic attacks, self esteem/confidence, mental health etc.

TRANSITION (PRIMARY – SECONDARY):



Triple transition:

1. From very familiar school environment to much larger school and new subjects

TRANSITION (PRIMARY – SECONDARY):

Triple transition:

2. From one set of peer group and friends to another peer group



TRANSITION (PRIMARY – SECONDARY):

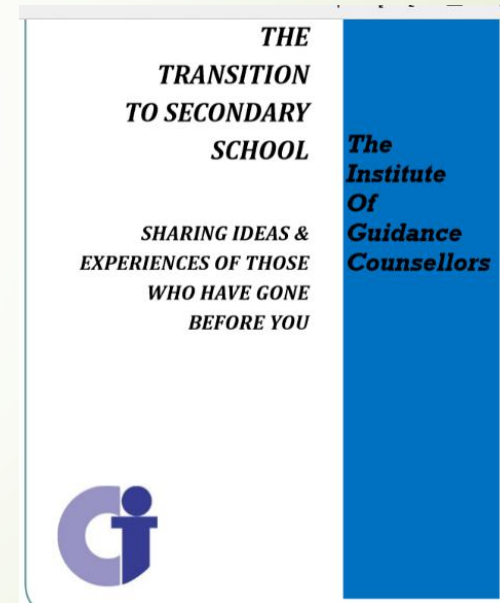
Triple transition:

3. From childhood to adolescence.



TRANSITION (PRIMARY – SECONDARY):

- Significant change – new friends, teachers, subjects, environment.
- Longer day.
- Organisation is paramount.
- Increased timetable & more homework.
- Opportunities for extracurricular activity.
- Preparation for state exams.



HOW TO MANAGE TRANSITION:

- ▶ Timetable and Homework journal.
- ▶ Routine and schedule.
- ▶ Quiet place with no distractions.
- ▶ Check journal each night and sign.
- ▶ Discuss their day in school.
- ▶ Approximately 1/1.5 hours homework/study a night.
- ▶ Reports ONLINE after Christmas & Summer tests.
- ▶ Parent-Teacher meeting.

SUBJECT CHOICE:



CORE SUBJECTS

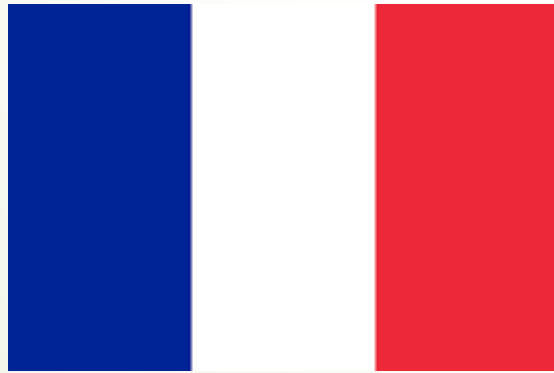
- Irish
- English
- Mathematics
- History
- Geography
- Science
- Religious Education (RE)
- Wellbeing (CORE):
 - Civic, Social & Political Education (CSPE)
 - Physical Education (PE)
 - Social, Personal & Health education (SPHE)
 - Treoir
 - Appendix i

NON-CORE SUBJECTS

- Visual Art
- Business Studies
- Classics
- Music
- Wood Technology
- French
- German
- Technical Graphics

FOREIGN LANGUAGES:

A decision not to do a modern language (French/German) may have implications on the range of courses/careers open to you later on.





3rd LEVEL MODERN LANGUAGE REQUIREMENT:

■ NUI Universities;

- UCC,
- UCD,
- NUI Galway,
- NUI Maynooth.

■ Also:

- St. Angela's College, Sligo
- National College of Art & Design (NCAD)
- Royal College of Surgeons (RCSI)
- Shannon College of Hotel Management
- Defence Forces Cadetship



JUNIOR CYCLE INFORMATION:

Information on the new Junior Cycle
(Framework, Subjects & Short Courses)
can be found at:

www.ncca.ie/en/junior-cycle

<https://curriculumonline.ie/junior-cycle/junior-cycle-subjects/>



CONTACT DETAILS:

- Ms. Leanne Goff (1st year GC)
- EMAIL: lgoff@wexfordcbs.ie
- Ms. Christine Martin
- EMAIL: cmartin@wexfordcbs.ie

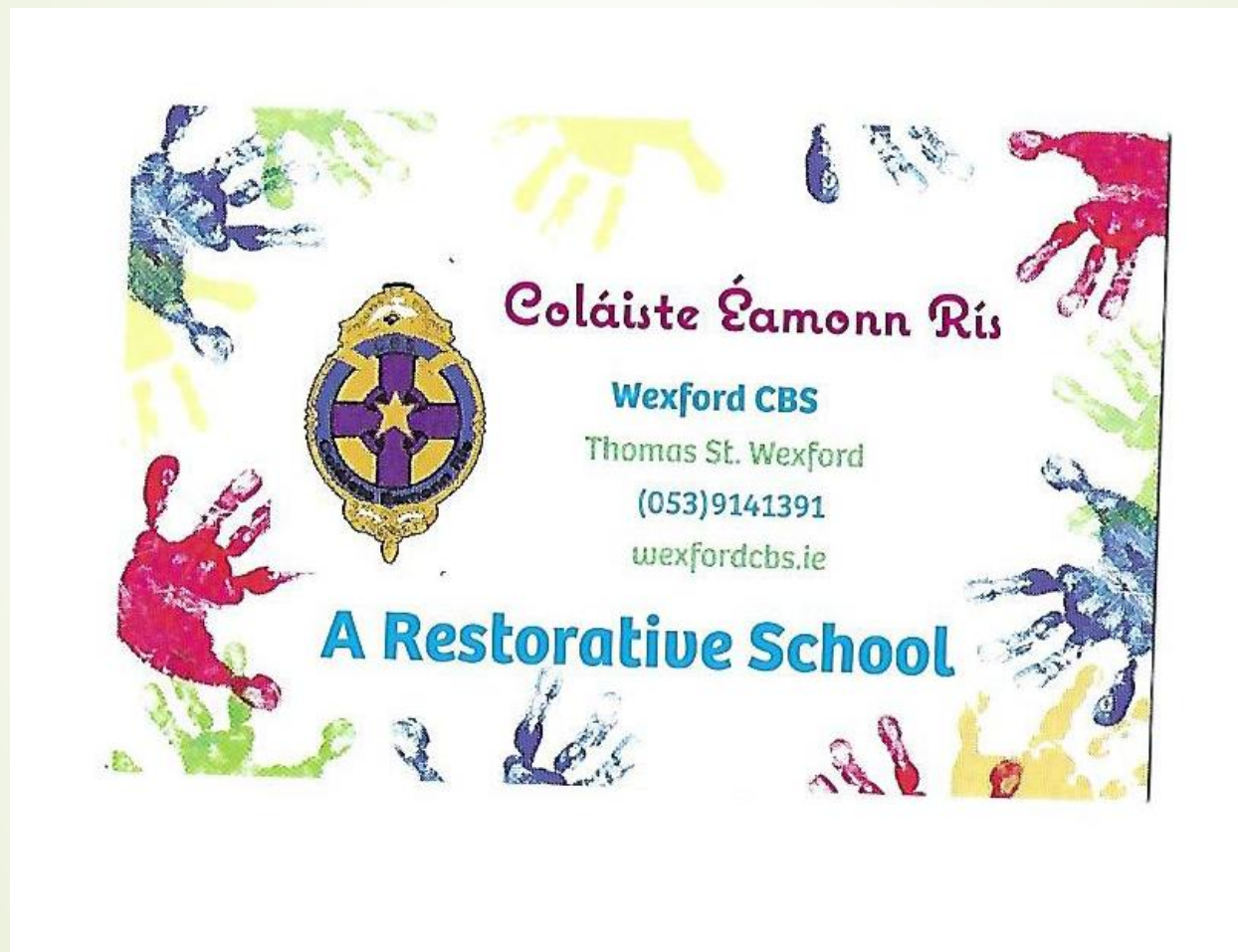


Restorative Practices, Positive Affirmation, Extra-curricular activities



John Nolan- Deputy Principal

Restorative Practice



Traditional Methods v restorative methods



A traditional approach to discipline focuses on the school rules that were broken, apportioning the blame and makes the wrongdoer accountable by punishing them.



Restorative practices focuses attention on the relationships that have been damaged, what needs to happen on all sides to rebuild these relationships and what can be learned from the experience.



A change of perspective

Traditional Discipline	Restorative Approach
Viewed in terms of rule-breaking	Viewed in terms of harm done to individuals
Focus on establishing blame or guilt	Focus on establishing responsibility and way forward
Authority figure with power to decide on penalty	Dialogue involving all parties in the incident
Accountability=getting punished	Accountability = working to put things right
Punishment to deter	Repair, apology and reparation
The needs of those affected are often ignored	The unmet needs behind the behaviour are addressed
Wrong doer feels hard done by and bitter	Wrongdoer has opportunity to face up to poor decisions
Victim has no involvement and feels powerless	Victim has involvement in process and contribution to outcome
Resentment, denial, anger, fear, revenge are common during and after process	Empowerment, honesty, openness, opportunity to move on, peace of mind after process

A whole school approach



Looking at our school mission statement, where our primary objective is to “Develop responsible individuals”, this is an approach that we aim to permeate through all aspects of school life in Wexford CBS, not only thinking in terms of the restorative approach for when things go wrong



We aim to highlight the proactive positive elements of the school and build good relationships which are so important.



The Restorative approach overlaps with the work the school is already doing to as it says in develop active and more participatory teaching and learning styles, social and emotional skills, behavioural plans, community cohesion, greater student voice and participation and preventative policies to minimise the risk of bullying and other areas of conflict within the school.

Restorative Questions

- What happened?
- What were you thinking at the time?
- What are you thinking/feeling now?
- Who has been affected by this?
- What do you need now to move on?
- What needs to happen now so the harm can be repaired?



Target outcomes of Restorative Practices

- The victim is able to feel safe again
- The focus is on harm to people and acceptable behaviours. This reduces the likelihood of blame or denial.
- The wrongdoer and his/her family are more likely to accept responsibility for what has happened
- The wrongdoer will develop a greater empathy from the experience and is less likely to re-offend as a result
- The offending student will be reintegrated into the wider school community

Positive Affirmation

- Positive Affirmation Committee (PAC)
- Merit Points
- Your part in Positive Affirmation



Extra-Curricular activities in Wexford CBS

- ▶ Leadership opportunities
- ▶ Students Council
- ▶ Young St Vincent de Paul
- ▶ Debating/Public Speaking
- ▶ Young Entrepreneur/Enterprise opportunities
- ▶ Christmas Fair
- ▶ Christmas show
- ▶ 1st Year Tour
- ▶ School Musical (with Presentation Secondary School)

Extra-Curricular activities in Wexford CBS

- School choir
- Cycle Against Suicide
- Sport in 1st Year
- Hurling
- Gaelic Football
- Soccer
- Basketball
- Rugby
- Athletics



CBS Astroturf Pitch



Digital Communications




COMMUNICATION

- VS Ware/Text Alert
- Parents to sign off on absences, appointments etc.
- Monitor attendance, behaviours, results
- Journal
- Newsletter
- www.wexfordcbs.ie
- Twitter - (@wexCBS)
- Instagram - (@wexfordcbs)
- Facebook - (Wexford CBS)
- DES Website - (education.ie)



Welcome to VSware

School

 Christian Brothers Secondary School

Username *

J.Nolan

Password *

[Create or reset your password](#)

Login

Don't have an account? [Learn more](#)



Click here to create your password

Password Reset



Username

Enter user name here



Last 4 digits of registered phone number

Enter last 4 digits of your mobile here



Send code

Resetting your student password? [Learn more](#)

Don't have an account? [Learn more](#)



Parent Dashboard



Welcome to the Dashboard

This page is your one-stop-shop to view live notifications on your child's attendance, behaviour, reports and more. If you want to explore further, click into your child's profile.



Your Children



Your Contact Details

Linda Scallan


Telephone:



Notifications

Nothing to report!


Notifications related to your children will appear here when available.



Attendance

Monitor your child's attendance at a glance, view records from an entire year or specific lesson.


[Learn More >](#)



Assessment

View your child's full academic record, track progress over time and download term assessments.


[Learn More >](#)



Behaviour

Keep track of your child's behaviour, monitor progress & teacher feedback.


[Learn More >](#)



Timetable

View your child's timetable, see realtime data for which lesson they are in at any given time.


[Learn More >](#)



Personal Info

Overview of your child's key info. Ensure that this is up to date.


[Learn More >](#)



Fees

Overview of school fees for the year, pay directly via card online.

[Learn More >](#)



Student Options

Submit next year's subject preferences directly to the school.

[Learn More >](#)

There are 8 optional subjects on the school curriculum which are : Art, Business, Classical Studies, French, German, Materials Technology Wood, Music, Technical Graphics Please note, as there are limited places in some subjects a lottery will be used to decide who gets into a subject that is over subscribed. Also serious consideration needs to be given to the order in which you select your subjects, starting with the subject you most want to study and working all the way down to the subject you least want to study. Please talk to your son about this and submit your sons preferences by Friday 28 March 2025

On the table(s) below choose subjects in order of the highest priority of preference (1, 2, etc).

Closing date: 28/03/2025

Subject Set 1

Preference	Subject Choice
1	<input type="text" value="Select a subject"/> ▼
2	<input type="text" value="Select a subject"/> ▼
3	<input type="text" value="Select a subject"/> ▼
4	<input type="text" value="Select a subject"/> ▼
5	<input type="text" value="Select a subject"/> ▼

Confirm

MAKING AN INFORMED CHOICE:

- ▶ What subject might they like? (use the fact sheets)
- ▶ What subjects might they need?
- ▶ Balanced choice of subjects
- ▶ KEY ADVICE:
- ▶ **PICK SUBJECTS THEY THINK THEY WILL ENJOY!!**





Student Devices for September 2025



Today's teaching has changed



- Blended Learning involves traditional teaching methodologies and using technology

NCCA Key Skills of Junior Cycle and digital technology with students

As a result, the NCCA have identified 8 key skills that students must learn and focus on in Junior Cycle.

The NCCA also outlines that “Working with digital technology forms a part of each of these skills”, therefore planning and using technology to build students **digital skills forms a fundamental part of learning and assessment in all Irish schools to prepare them with the skills they will need for the world of work today and into the future**

LOOKING AT OUR SCHOOL 2022: A QUALITY FRAMEWORK FOR POST-PRIMARY SCHOOLS

Standards	Statements of effective practice	Statements of highly effective practice
<p>Promote a culture of reflection, improvement, collaboration, innovation and creativity in learning, teaching and assessment</p>	<p>The principal and other leaders in the school support teachers to use digital technologies in their learning, teaching and assessment practices, and evaluate the effectiveness of the use of these technologies.</p>	<p>The principal and other leaders in the school lead a process of empowering teachers to embed digital technologies in their learning, teaching and assessment practices, and regularly evaluate the effectiveness of the use of these technologies.</p>





An Rólán Oideachais
Department of Education

Digital Strategy for Schools

to 2027



Digital strategy for schools 2027

- ▶ The Department of Education has published a new Digital Strategy for Schools. The purpose of this new Strategy is to ensure that young people in our schools, can benefit as much as possible from digital technologies.
- ▶ The new Strategy aims to support all pupils and students to develop digital skills and benefit from the potential of digital technology, while also staying safe and well when online. **The introduction of student devices should help students develop digital skills.**



OLIVE for Education



Roisin Beaver



Parents Info Night for **CBS Wexford**
Presenter **Roisin Beaver**
Date **Wednesday 19th March 2025**



What we'll cover:

- Introductions
- What is 1:1 ?
- The Olive for Education Model
- Next Steps
- Q&A



About Olive for Education

OLIVE

Part of a Global
Education Leader



Customer
Obsessed

40+

Years of
Experience



On-demand
Support

 Microsoft
Google

Trusted
Partners



Security and
Privacy Experts

ASUS

Official ASUS
Repair Centre



Offices in Dublin,
Galway and Kilkenny



1:1 - what does it mean for students?

1:1 (One to One) is where, in a school, each student has their own dedicated device which they use as part of their learning.

The device belongs to the student, so they use it both in school and for studying at home.



1:1 supports top 10 skills of the future



Analytical Thinking
& Innovation



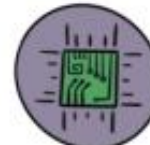
Active Learning
& Learning Strategies



Complex Problem
Solving



Leadership
& Social Influence



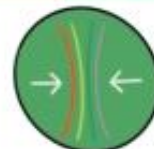
Technology Use,
Monitoring & Control



Technology Design
& Programming



Critical Thinking
& Analysis



Resilience, Stress
Tolerance & Flexibility




Creativity, Originality
& Initiative



Reasoning, Problem
Solving & Ideation



The image shows three young women sitting at a desk, each with a laptop. The woman on the left has long blonde hair and is looking towards the camera. The woman in the middle has dark hair and is smiling while looking at her laptop. The woman on the right has long brown hair and is looking down at her laptop. The background is a solid orange color. There are large, semi-transparent white arrows pointing towards the center of the image. The text 'The Olive for Education Model' is overlaid in the center in a bold, white, sans-serif font. In the bottom right corner, there is a small circular logo with a white and orange design.

The Olive for Education Model



Everything your child needs for digital learning



2-in-1 laptop



Secure set up &
device management



Flexible payment
options



Dedicated support
from the OFE team



5 Year extended
device warranty

*Warranty includes accidental damage**





2-in-1 Student Laptop

- **ASUS convertible laptop** designed specifically for use in Education
- Robust 360° hinge enables use as a laptop, tent, stand, and tablet
- 12.2-inch Corning® Gorilla® Glass touch panel protects against scratches and chips
- **128 GB of storage and 8GB of RAM** for high performance
- **Guaranteed battery life** to last the entire school day
- Requirement to purchase a **protective case** for €37. This can reduce the risk of damage by up to 85%

EXTENDED 5 YEAR WARRANTY WITH ACCIDENTAL DAMAGE COVER

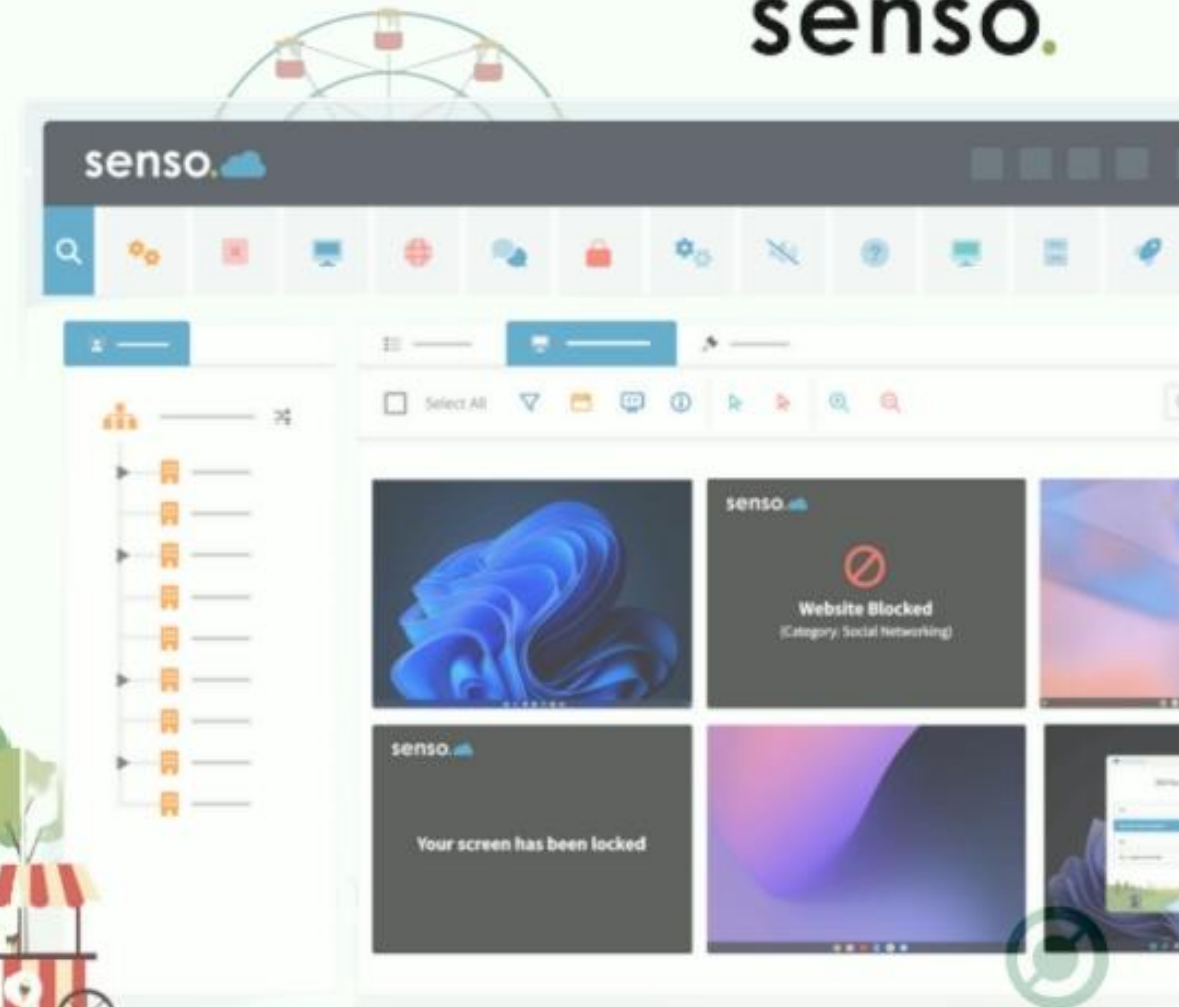


Classroom Management and Safety



Senso classroom management tools help to create a focused environment for students, reducing distractions and helping learners stay focused on their tasks.

Educators can easily oversee multiple screens and use features like 'block internet' and 'lock screen' to regain control with just a few clicks.



Trusted, dedicated Support for Parents

<4hrs

Average First
Response Time



80%

Queries handled
at first contact

<8hrs

Average
Resolution Time

"What truly sets OFE apart is their customer service. Their support team has become an extension of our school community. They respond to queries within hours, often minutes, and have conducted several additional training sessions at no extra cost when new staff joined mid-term."

Colin Doyle Principal at Stepside ETSS



Flexible Payment Options



Card payment

Order the device now and pay in full using your debit or credit card.



Olive Pay

Pay off in flexible, interest-free installments before the 31st of July 2025.



Humm Finance

Pay monthly over 6 or 12 months. Credit check and interest rates apply.



What's included



2-in-1 Student Laptop & Case

ASUS convertible laptop with garaged digital pen and protective case.



Device Set up & Security

Complete build and configuration with education software and Senso secure classroom management tools pre-installed.



Ongoing Support & Extended Warranty

Device management, customer support for teachers, students and parents. 5 year device warranty, with accidental damage cover.

Bundle total: €776



What happens next...

1

Order Online

You'll receive a guide from the school with links and information to place your order via our e-store **before the 31st of July**.

2

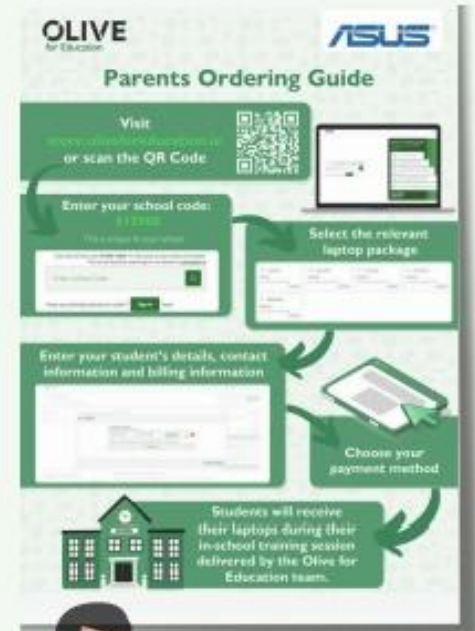
Delivery to the School

Once paid in full, your child's device will be delivered to the school in the new school year.

3

New Device Workshop

When the devices have been delivered students will receive their new laptops during a workshop with the OFE team.



The image features five hands of various skin tones raised against a solid orange background. The hands are positioned from left to right, with the first hand on the far left and the fifth on the far right. The text "Any questions?" is centered over the hands in a large, white, bold, sans-serif font. In the bottom right corner, there is a small white circular logo containing a stylized globe or network symbol. The background also has some faint, light-colored abstract shapes.

Any questions ?





Contact details

principal@wexfordcbs.ie

jhegarty@wexfordcbs.ie

jinolan@wexfordcbs.ie

lgoff@wexfordcbs.ie

gforde@wexford.ie

mconnell@wexford.ie

fdavey@wexfordcbs.ie



Reminder

Forms required (to be returned by Friday 28 March)

School Record Form*

Code of Behaviour Form *

Acceptable Use Policy Form *

Acceptable Use Policy (E-Mail) Form *

School Trip Permission Form *

Circular 0023/2016-Data Collection Form *

Sensitive Personal Data Form *

Guidance and Learning Support Consent Form *

Subject Choice Form (to be filled in online by Friday 28 March 2025)



Questions

Any queries or clarification needed



➤ The CBS 5k fun run takes place Sunday 25th May at 11am. You can register on [popupraces.ie](https://www.popupraces.ie)



➤ Adult €10

➤ Under 16 €5

➤ Family 2+ 2 (U12) €25

➤ Family 2+3(U12) €30



➤ <https://www.popupraces.ie/race/wexford-c-b-s-5k-fun-run-2025/>

